

Connecting education,  
health and community

**FAMILY**  
LINQ



Integrated school-based hubs

**The Queensland Government is working collaboratively with The Bryan Foundation to develop and deliver FamilyLinQ: Queensland's first two integrated school-based hubs. The first will be located at Kingston State School and the second will be established at a new primary school at Logan Reserve.**

FamilyLinQ will bring together education, health and community services under one roof, to form dynamic, integrated school-based community hubs to improve the health, education and life outcomes for students and their families.

## Each hub will offer

- ▶ A physical 'single front door' for the school and hub
- ▶ Onsite health services
- ▶ A soft entry space including a kitchen and informal lounge
- ▶ Central play space
- ▶ Training and meeting rooms to facilitate education



## Services in the FamilyLinQ hub



Quality education  
and learning



Early childhood support  
and services



Onsite health  
services



Family support  
programs



Adult education and  
training programs



Community activities  
and programs

## FamilyLinQ objectives

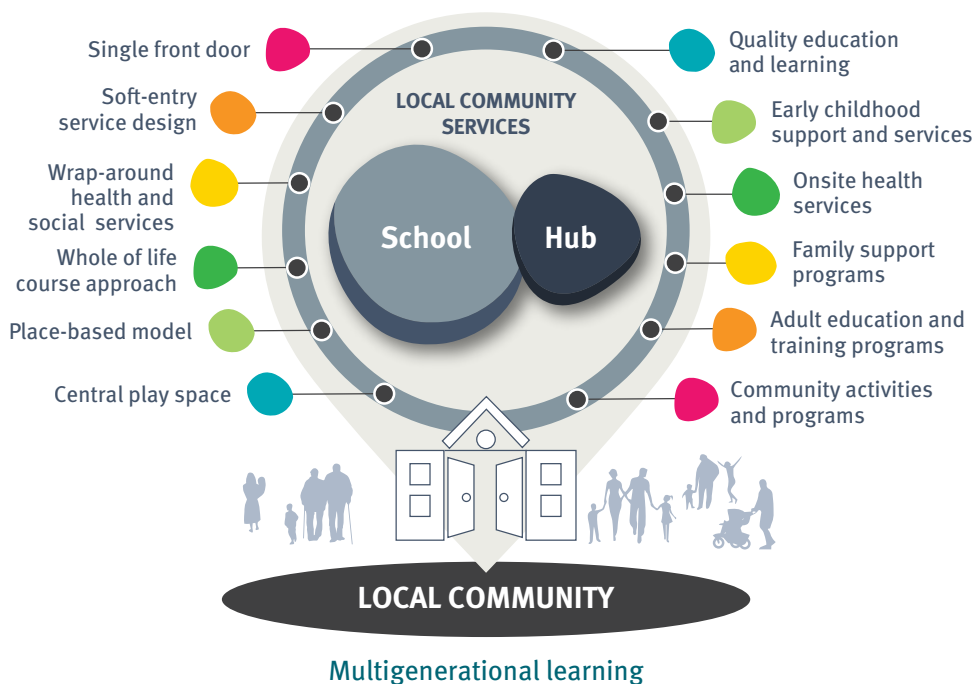
- ▶ Improve educational, health and life outcomes for students and their families
- ▶ Give school communities access to services and programs enabling them to thrive (the right service, the right time and the right place)
- ▶ Create safe and welcoming **FamilyLinQ** school community environments
- ▶ Deliver an integrated service delivery model responding to **FamilyLinQ** school community needs
- ▶ Encourage connection and pride amongst the **FamilyLinQ** school community
- ▶ Develop a sustainable, tailored and dynamic model to improve outcomes in identified communities across Queensland
- ▶ Reduce systemic barriers to working collaboratively across sectors by challenging existing beliefs, funding and operational systems and processes

## The FamilyLinQ model

- ▶ Will provide a new purpose-built school hub that will be the centre of school community life
- ▶ Will provide a single front door entry into both the hub and the school administration area
- ▶ **FamilyLinQ** staff will become part of the school community and will facilitate various activities, programs and services
- ▶ The hub will offer 'soft entry' access to a range of quality education, health and learning services including child and family programs and activities, together with parent training and employment focused upskilling initiatives
- ▶ Designed to integrate government and community services, this co-designed model will support students and families as they grow, learn and thrive

**FamilyLinQ school communities will be welcoming, inclusive and safe places that improve the health and education outcomes for children and their families.**

## How FamilyLinQ will co-exist in the school



## Timeline

